

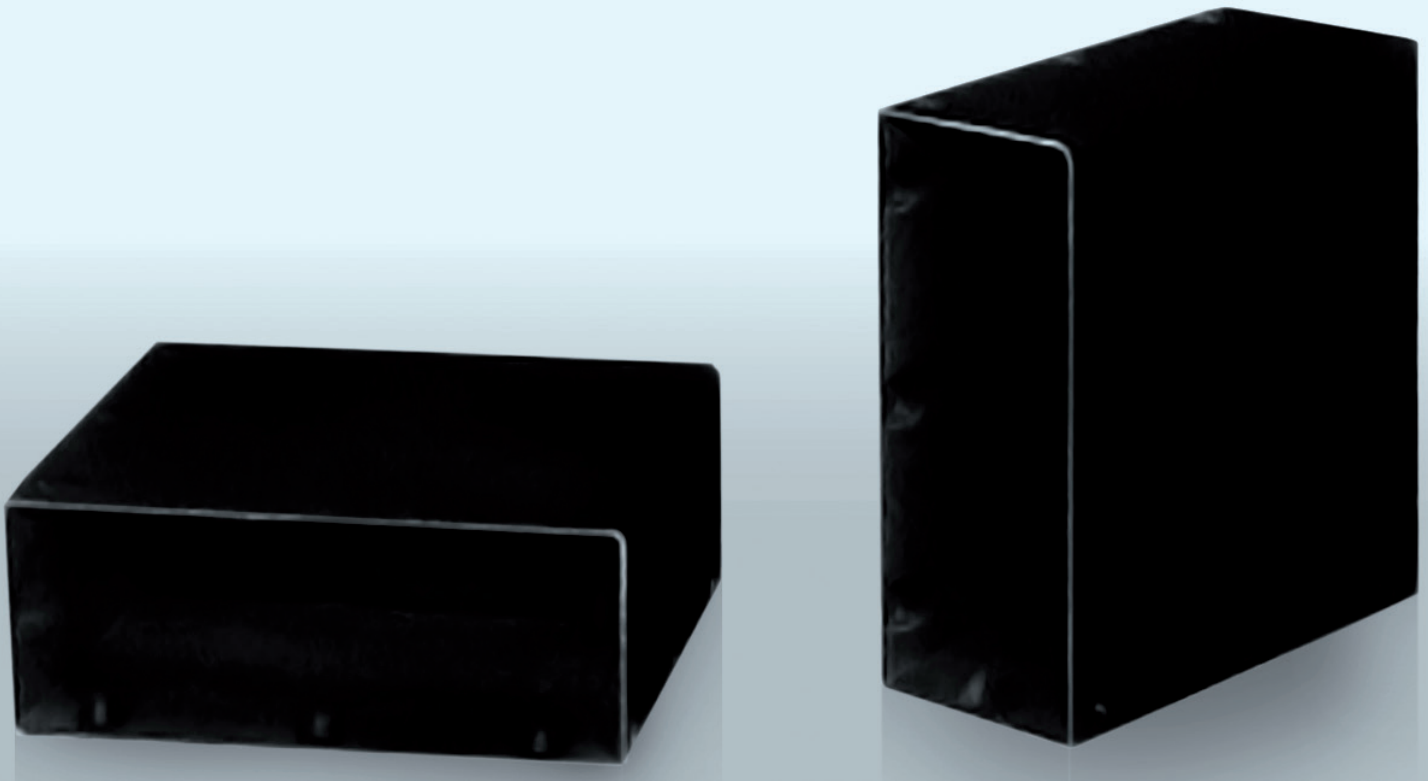
# alfakel

TECHNOLOGY FOR SOUNDPROOFING



## SOUND ABSORBING **BAFFLES FOR SILENCERS**

# S 102



### **Description**

The Alfakel S 102 are modular rectangular elements made of two parts precast then assembled. The sound-absorbing material is made of textile fiber.

### **Applications**

The Series **Alfakel S 102** baffles are designed for absorptive silencers. Because they are modular, these elements can be assembled to reach the desired size of silencer for the specific sound-absorbing needs. Assembling or stacking together more modules will achieve the acoustic and aerodynamic features desired.

### Acoustic and Aerodynamic Properties

The purpose of the **Alfakel S 102** modules is to reduce noise propagated through air ducts.

Figure 1 shows the number of parallel baffles needed in relation to the head loss.

Figure 2 shows the values of insertion loss for one or more assembled baffles.

### Diagram of Alfakel S 102 Head Loss

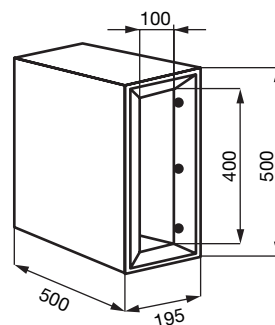
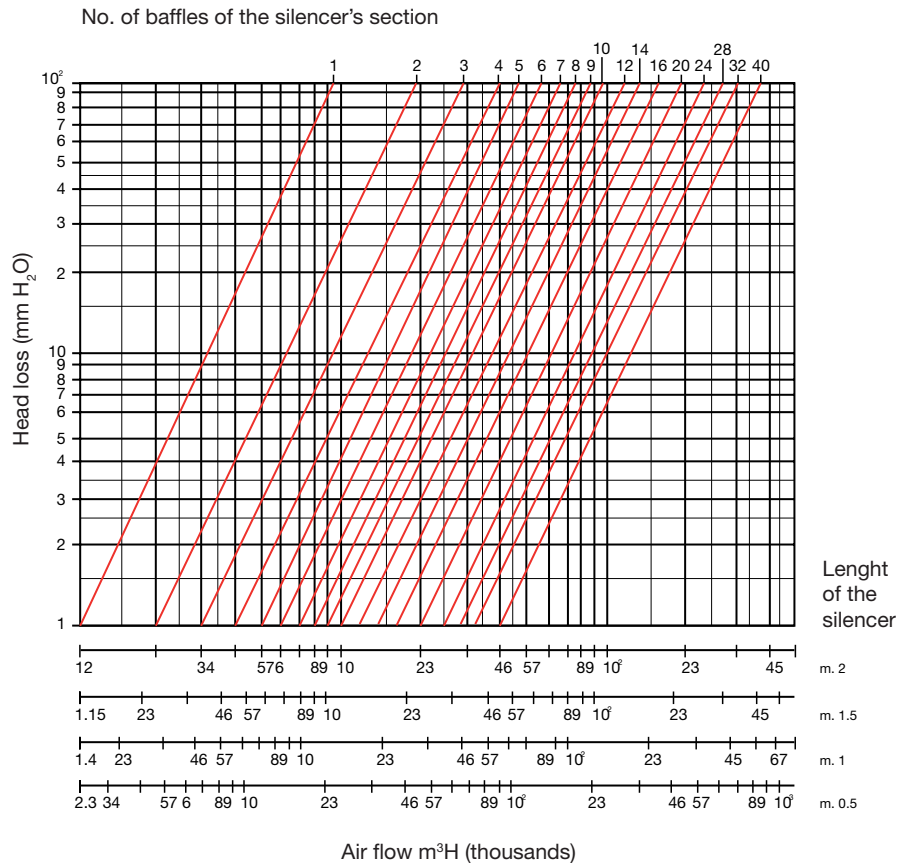


Fig. 1

## Insertion Loss

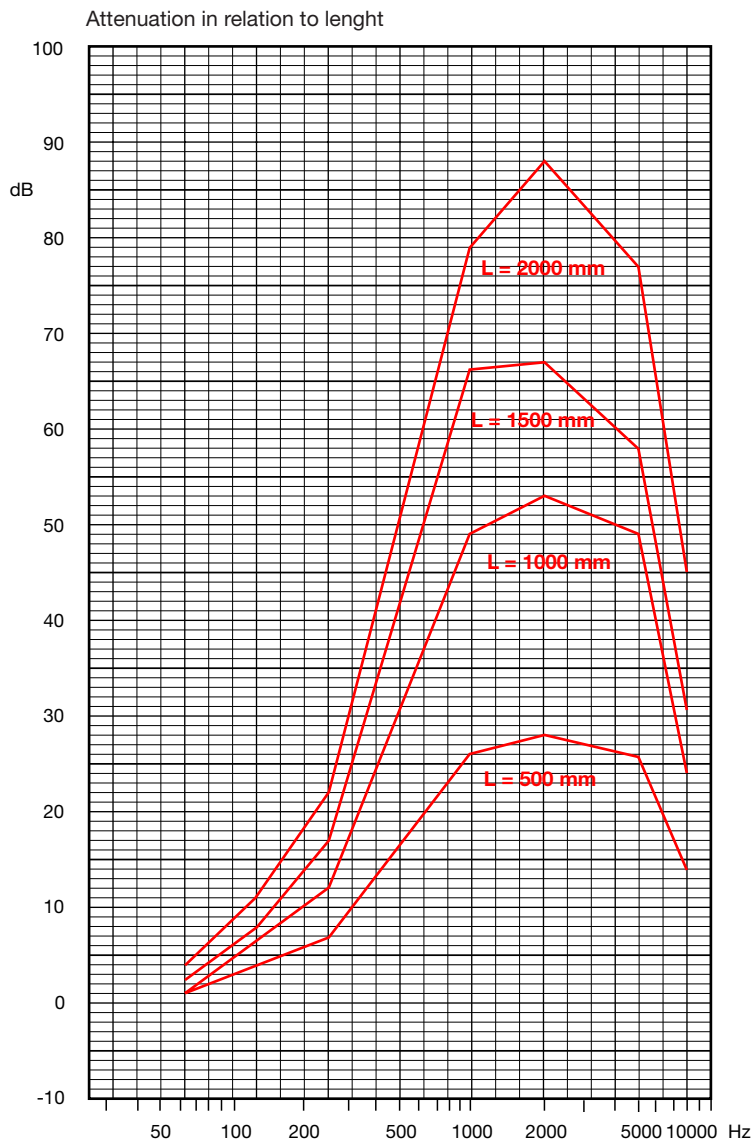


Fig. 2

### General Properties

Weight:	4 Kg approximately
Standard dimensions:	195 x 500 x 500 mm.
Temperatures:	- 40 + 90 °C
Fire reaction:	low flammability
Mechanical strength:	good
Wear resistance:	good

### Benefits

- Easy to assemble absorption silencers
- Can reduce the size of the silencers in most implementations
- Sturdy
- Easily interchangeable

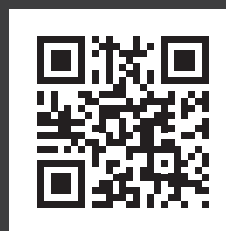
## Applications

The **Alfakel S 102** baffles can be assembled or stacked and inserted in a metal duct of suitable size for the flow capacity required. The flanged edges of the duct will allow easy insertion and extraction of the silencer.

If the fluid contains grid or impurity, it is recommended that one side of the silencer be constructed so that it can be easily removed when it is necessary to replace the panels.

The photos below show some of the applications of **Alfakel S 102** as absorption type silencers.

**alfakel**  
TECHNOLOGY FOR SOUNDPROOFING



### Alfakel s.r.l.

Via G. Galilei 39/D

42027 Montecchio Emilia (RE)

Tel. 0522 86.35.23

Fax 0522 86.60.08

E-mail: [info@alfakel.it](mailto:info@alfakel.it)

[www.alfakel.it](http://www.alfakel.it)

*The descriptions of Alfakel's products are merely indicative. Alfakel retains the rights to apply further modifications.*

